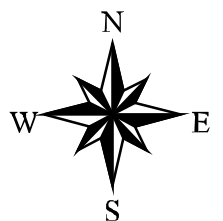


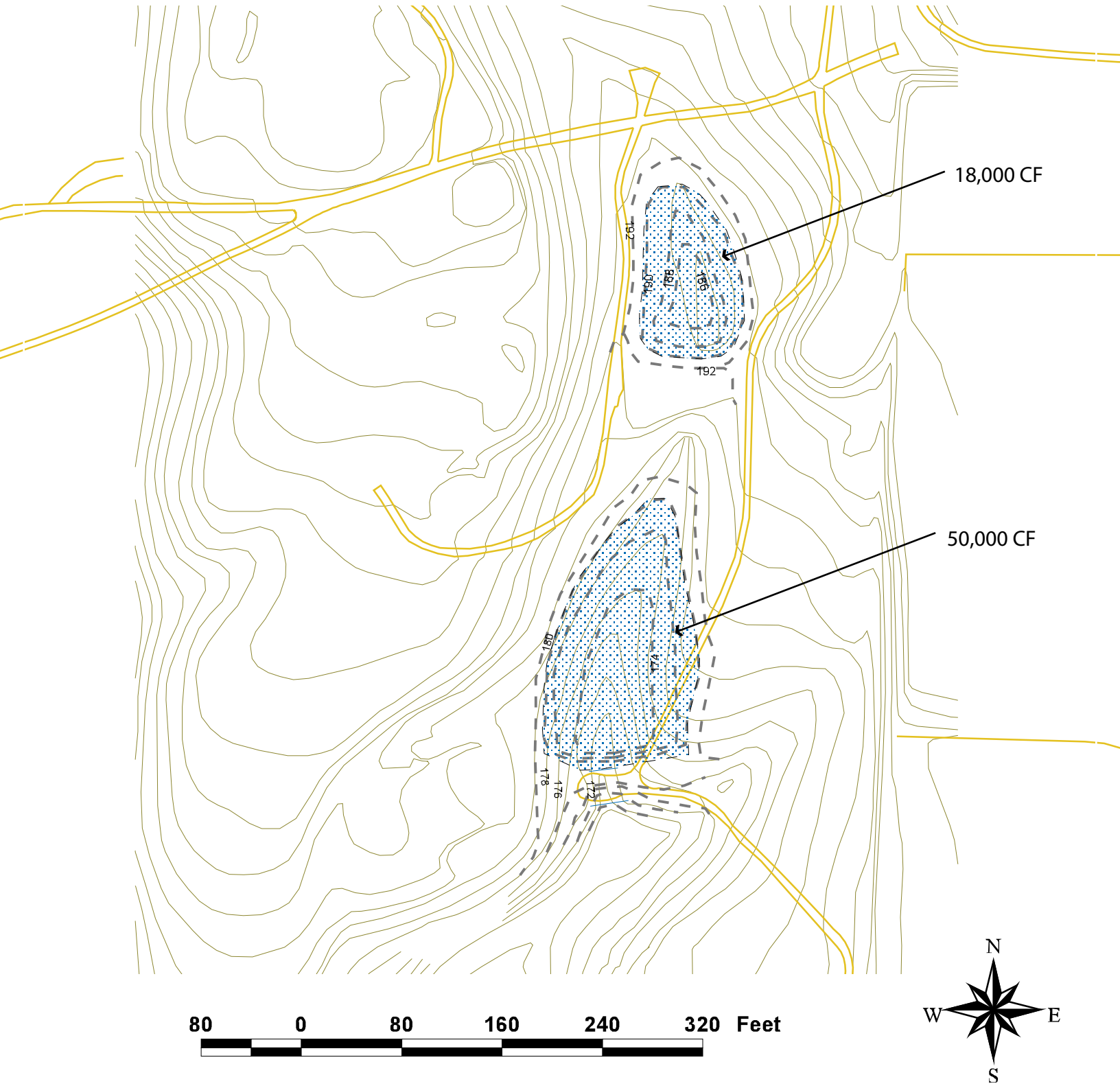
Note: This four-pond series configuration was the initial concept for the golf course. The purpose is flood control and water quality. Subsequent analysis showed that only two ponds were necessary, and the middle two were chosen for design.



Dry Detention Pond Concept
Santa Barbara Golf Course
Bradley Owens, GeoSyntec Consultants

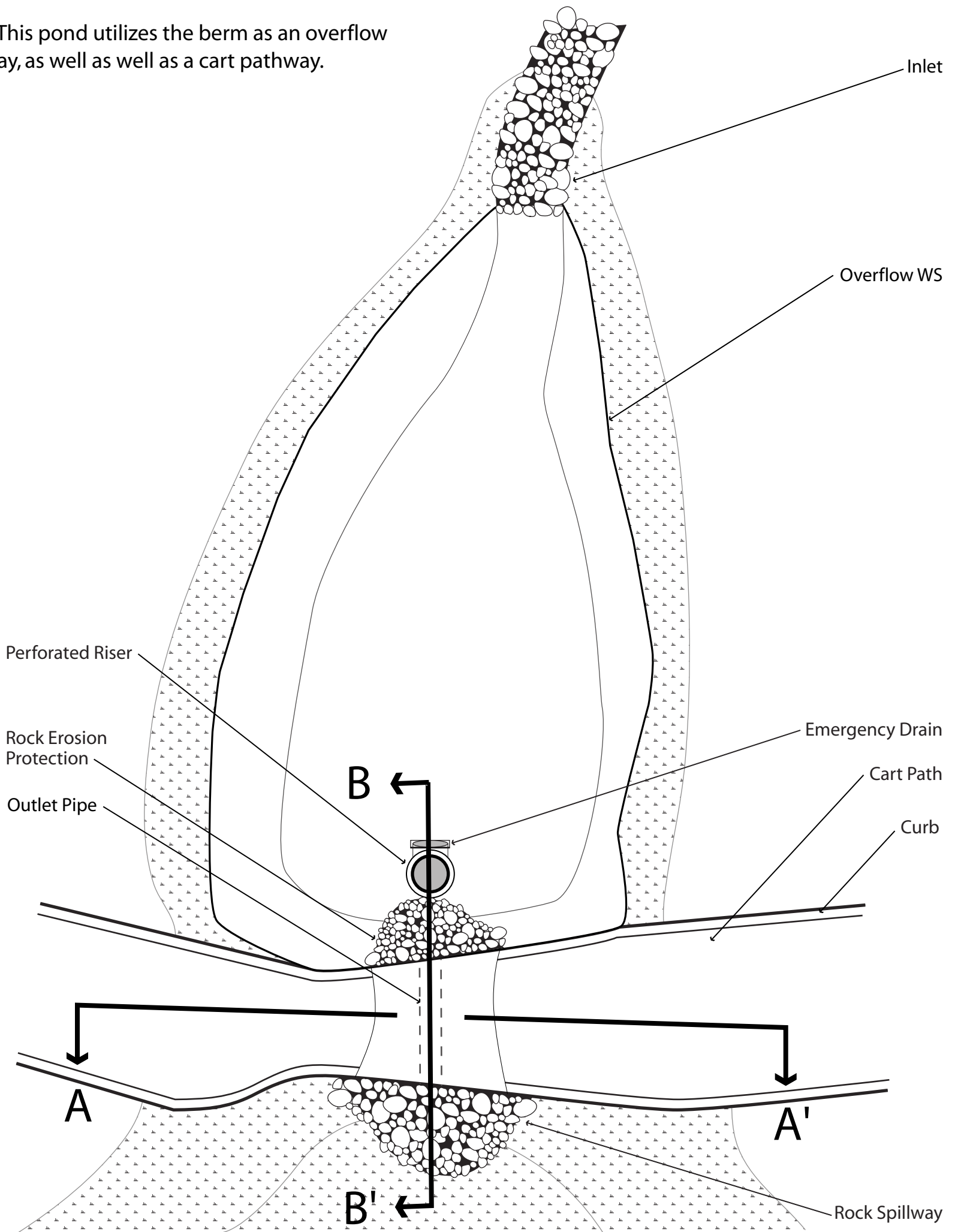


Note: Pond sizing was accomplished using a set of custom designed ArcView tools which analyzed the topography and the surface area to determine volume.

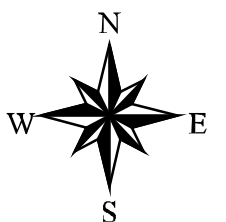


Dry Detention Pond Layout
Santa Barbara Golf Course
Bradley Owens, GeoSyntec Consultants

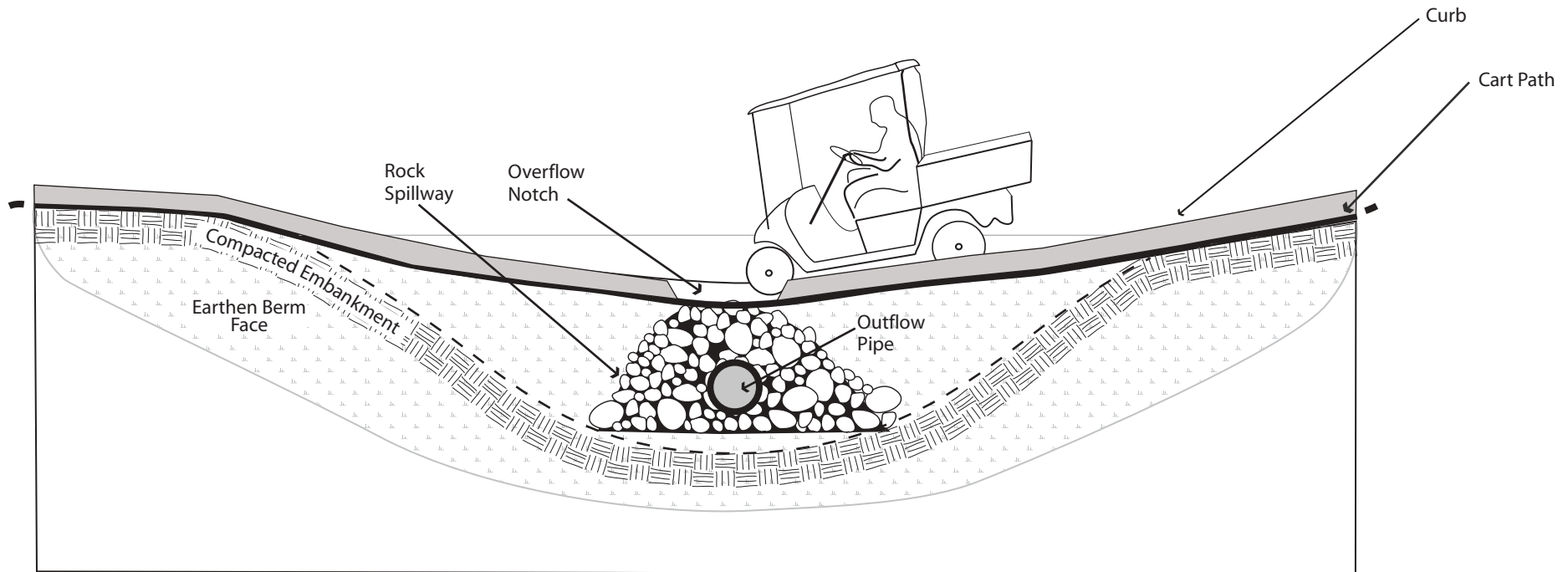
Note: This pond utilizes the berm as an overflow spillway, as well as a cart pathway.



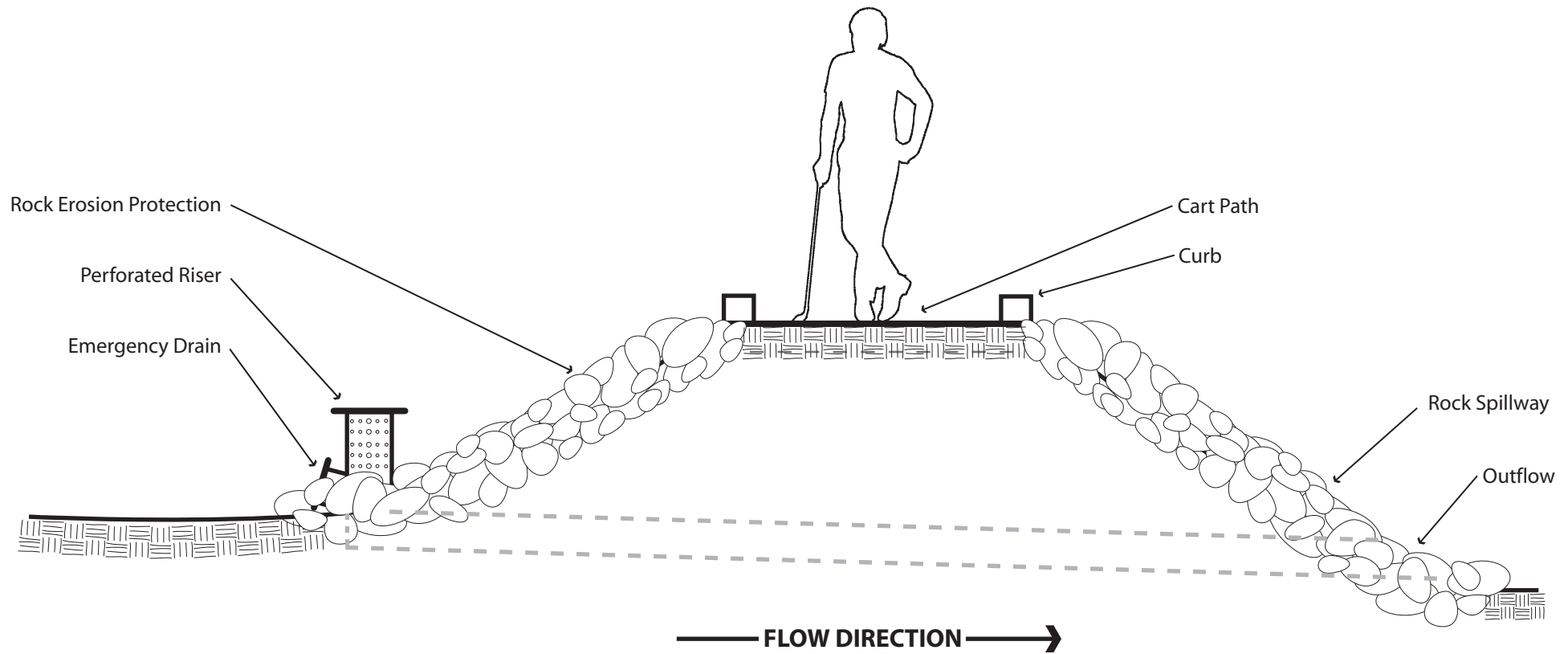
Detail, Lower Pond Layout
Santa Barbara Golf Course
Bradley Owens, GeoSyntec Consultants



Note: The berm functions as a cart pathway as well as a overflow spillway. The curb is to guard against a cart veering off over the side, and is notched where the flow would be directed in the event of a overtop flood event.



Section A-A'
Lower Pond Berm & Cart Path
Santa Barbara Golf Course
Bradley Owens, GeoSyntec Consultants



Section B-B'
 Lower Pond Berm & Path
 Santa Barbara Golf Course
 Bradley Owens, GeoSyntec Consultants